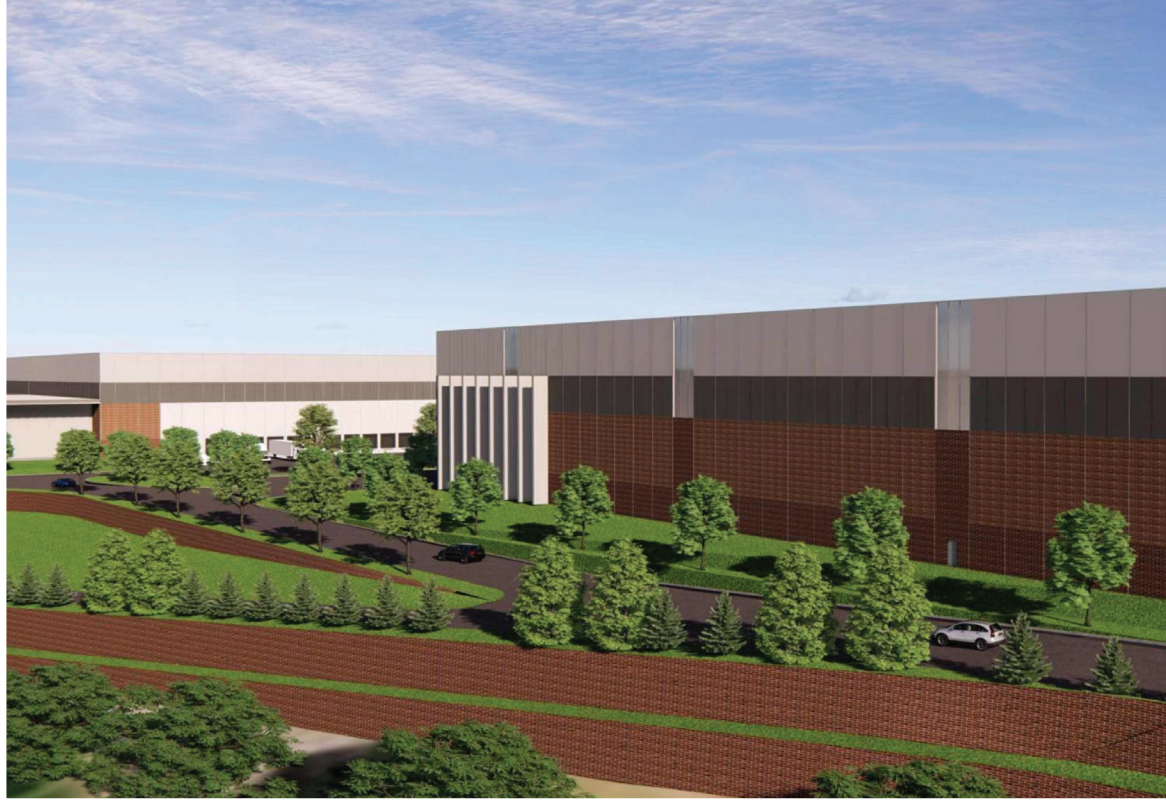


# 59 ROUTE 10 EAST HANOVER, NJ

PROPOSED INDUSTRIAL SPACE FOR LEASE



59 Route 10  
East Hanover, NJ  
07936

FOR LEASING INFO CONTACT:

**Matthew P. Flath**  
**973-735-2238**  
[mflath@onyxequities.com](mailto:mflath@onyxequities.com)

Disclaimer: 2022 Onyx Equities, LLC. All rights reserved. This information has been obtained from sources believed reliable, but has not been verified for accuracy nor completeness. You should conduct a careful, independent investigation and verify all information. Any reliance on this information is solely at your own risk.

# 59 ROUTE 10

CONVENIENT REGIONAL ACCESS



59 Route 10  
East Hanover, NJ  
07936

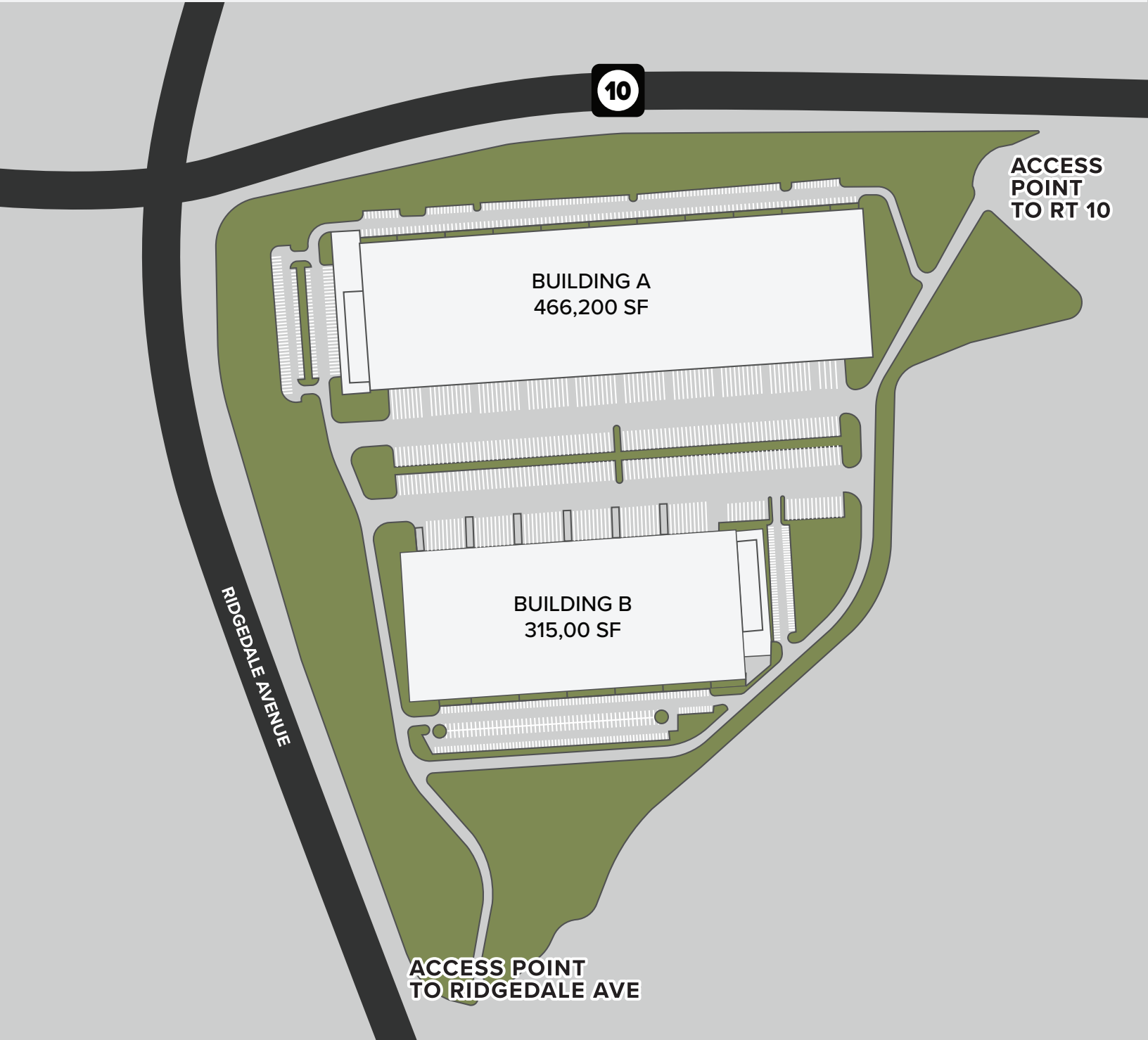
FOR LEASING INFO CONTACT:

Matthew P. Flath  
973-735-2238  
mflath@onyxequities.com

Disclaimer: 2022 Onyx Equities, LLC. All rights reserved. This information has been obtained from sources believed reliable, but has not been verified for accuracy nor completeness. You should conduct a careful, independent investigation and verify all information. Any reliance on this information is solely at your own risk.

# 59 ROUTE 10

## AERIAL SITE PLAN



10

ACCESS  
POINT  
TO RT 10

BUILDING A  
466,200 SF

BUILDING B  
315,00 SF

RIDGEDALE AVENUE

ACCESS POINT  
TO RIDGEDALE AVE



59 Route 10  
East Hanover, NJ  
07936

FOR LEASING INFO CONTACT:

Matthew P. Flath  
973-735-2238  
mflath@onyxequities.com

Disclaimer: 2022 Onyx Equities, LLC. All rights reserved. This information has been obtained from sources believed reliable, but has not been verified for accuracy nor completeness. You should conduct a careful, independent investigation and verify all information. Any reliance on this information is solely at your own risk.

# 59 ROUTE 10

## BUILDING SPECS

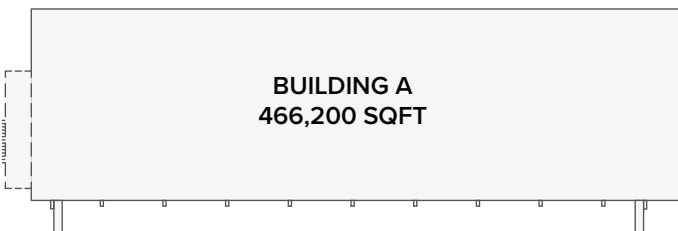


## BUILDING A

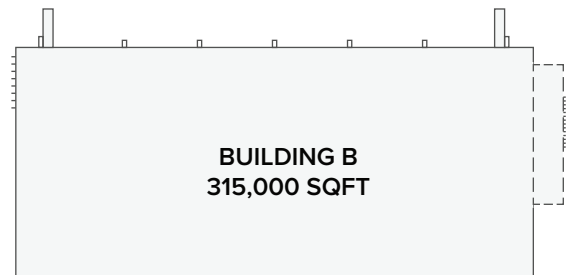
## BUILDING B

Total Building SQFT	466,200 SF
Office SQFT	22,800 SF
Building Height	To be built to suit tenant's needs, up to 75'
Column Spacing	60' x 60'
Loading Docks	73 Docks
Car Parking Spaces	377 Spaces
Banked Parking Spaces	202 Spaces
Trailer Parking Spaces	92 Spaces

Total Building SQFT	315,000 SF
Office SQFT	22,800 SF
Building Height	To be built to suit tenant's needs, up to 75'
Column Spacing	60' x 60'
Loading Docks	48 Docks
Car Parking Spaces	331 Spaces
Trailer Parking Spaces	113 Spaces



BUILDING A - Ground Floor Plan



BUILDING B - Ground Floor Plan



59 Route 10  
East Hanover, NJ  
07936

FOR LEASING INFO CONTACT:  
**Matthew P. Flath**  
973-735-2238  
mflath@onyxequities.com

Disclaimer: 2022 Onyx Equities, LLC. All rights reserved. This information has been obtained from sources believed reliable, but has not been verified for accuracy nor completeness. You should conduct a careful, independent investigation and verify all information. Any reliance on this information is solely at your own risk.